

Poplar "Paired" Villa Home 12/1/05 1355 -1590 Sq. Ft.

S2 Bdg

S2DR Bdg

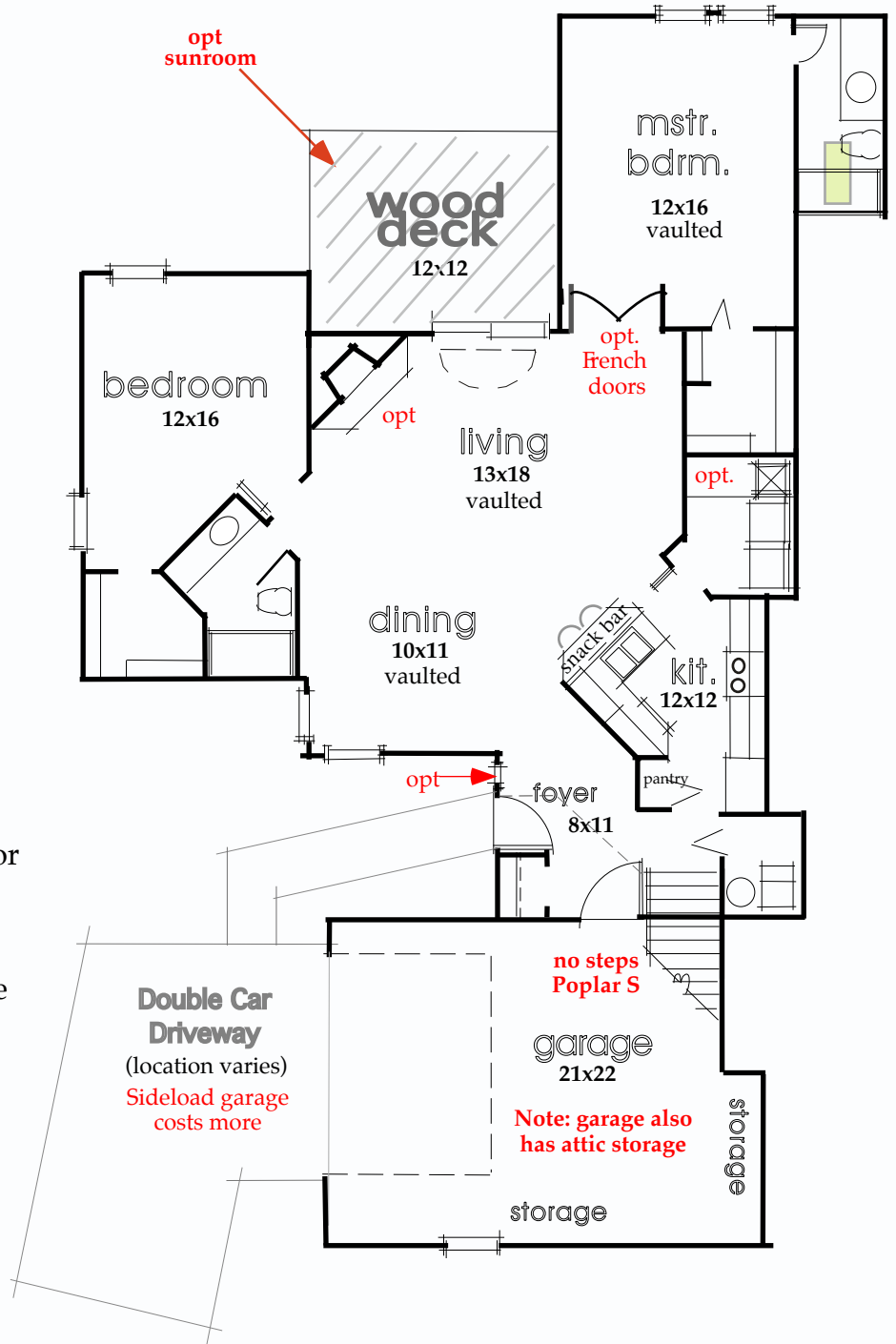
Ranch Models with opt. bedroom/loft over garage

small

These beautiful ranch models feature a double car attached garage, two full baths, opt. upstairs loft/bedroom and a unique angular gourmet kitchen. Although truly affordable, these units still include vaulted ceilings, secluded wood deck, one skylight, tiled foyer, custom recessed lighting, arch top patio window and much more...

"Value Plus" Series Standard Features

- ◆ Central air conditioning
- ◆ Oak doors and trim
- ◆ Ceramic tile entry foyer
- ◆ Oak kitchen cabinets
- ◆ Large kitchen pantry
- ◆ Arch top window
- ◆ Deluxe 18 cu. ft. refrigerator
- ◆ Upgraded electric range
- ◆ Soaring vaulted ceilings
- ◆ Master bath skylight
- ◆ High efficiency gas furnace
- ◆ Large private wood deck
- ◆ Thick cut pile carpet
- ◆ Built-in snack bar
- ◆ Custom recess lighting
- ◆ Real oak loft railings
- ◆ Extra-large storage area
- ◆ No-wax linoleum floors
- ◆ Large double car garage
- ◆ Much, much, more...



First Floor

Poplar P V -S Two bedroom ranch (no loft) 1355 sq. ft.

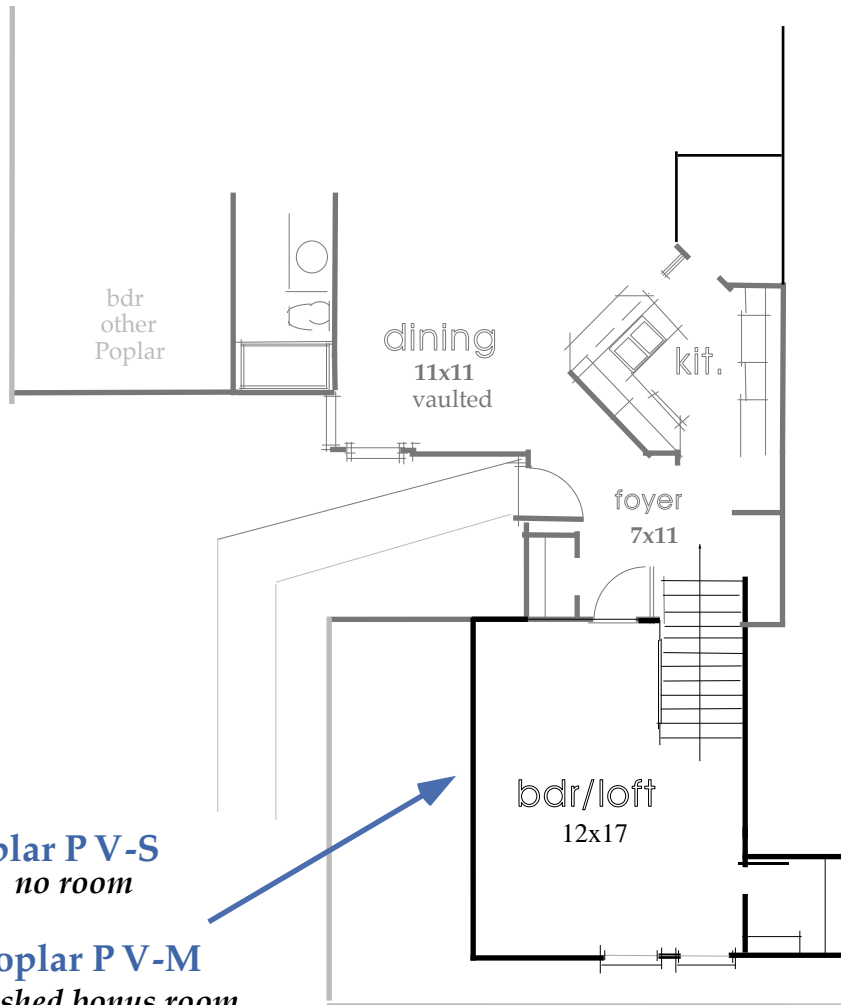
Poplar P V -M Two bedroom ranch with bonus room up 1355 sq. ft.

Poplar P V -L Three bedroom ranch with loft/bedroom up 1590 sq. ft.

RDW Company

www.rdwcompany.com

(330) 702-8787



Poplar P V-S
no room

Poplar P V-M
unfinished bonus room

Poplar P V-L
finished room

Poplar P V-S	<i>Two Bedroom Ranch (no upstairs)</i>	1355 Sq. Ft.
Poplar P V-M	<i>Two Bedroom Ranch with bonus room up</i>	1355 Sq. Ft.
Poplar P V-L	<i>Three Bedroom Ranch with bdr/loft up</i>	1590 Sq. Ft.