

| | | |
|---------------------|---|--------------|
| Cherry P V-M | <i>Two Bedroom Ranch with loft & two bonus rooms up</i> | 2138 Sq. Ft. |
| Cherry P V-L | <i>Three Bedroom Ranch with loft, bedroom and bonus room up</i> | 2418 Sq. Ft. |

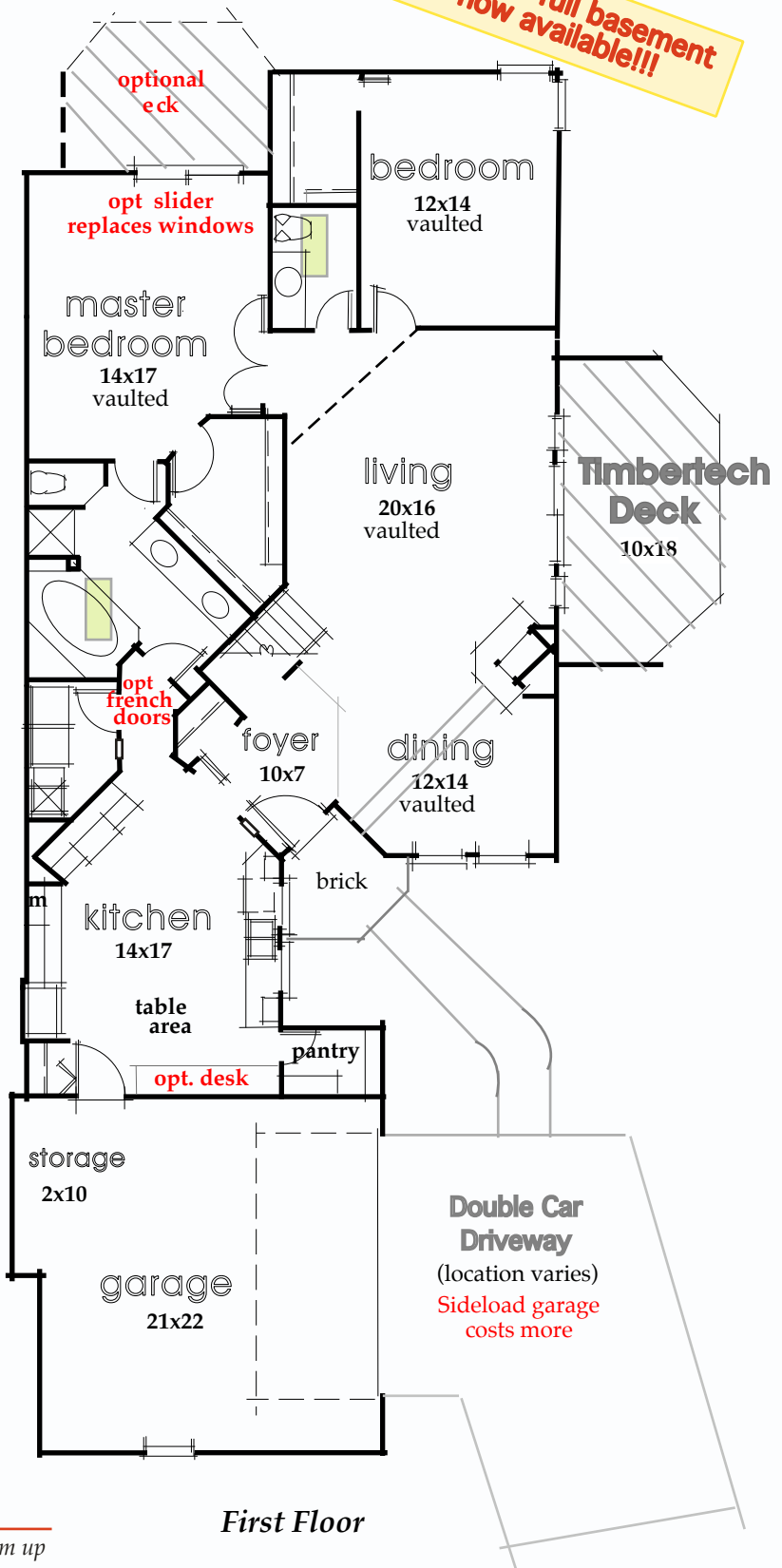
Ranch Models with loft, two or three bedrooms & bonus room up

**optional full basement
now available!!!**

These striking "Limited Edition" Ranch Villa Homes both feature a dramatic glass railed loft, two and a half full baths, beautiful 20' high vaulted ceilings and an extra large gourmet kitchen with pantry. These exquisite ranch homes also includes a lovely two sided fireplace, stunning arched windows, huge master bedroom suite with french doors, all tiled floors, two skylights, double car garage and much, much more...

**"Limited Edition" Series
Standard Features**

- ◆ Double sided fireplace
- ◆ Self-cleaning electric range
- ◆ Deluxe 20 cu.ft. refrigerator
- ◆ Central air conditioning
- ◆ Oak doors and oak trim
- ◆ Custom corner soaking tub
- ◆ Separate master bath shower
- ◆ Raised panel kitchen cabinets
- ◆ Textured ceramic tile floors
- ◆ High efficiency gas furnace
- ◆ Extra large "Timbertech" deck
- ◆ Large double car garage
- ◆ Beautiful french doors
- ◆ Kitchen table area
- ◆ Custom recess lighting
- ◆ Arch top kitchen windows
- ◆ Large laundry room w/ tub
- ◆ 2nd skylight in main bath
- ◆ Stealth garage door opener
- ◆ Cedar look lap siding
- ◆ Soaring vaulted ceilings
- ◆ Much, much, more...



Cherry P V-M

2138 sq. ft.

Two bedroom ranch with loft & two bonus rooms up

Cherry P V-L

2418 sq. ft.

Three bedroom ranch with loft, bdr. & bonus room up